

# Moremi – Edutainment

(Management Education + Entertainment)

## The Story Synopsis

The play Moremi is a combination of original African history and exciting fiction. It is named after the heroine of the story – an exceptional lady who became Queen of Ile-Ife, West Africa. Her once-proud and successful community had been repeatedly exposed to numerous threats by the neighbouring Ugbo community in order to establish superiority in the region. The Ugbo people were so strong, fearsome and successful that the threat they posed to Moremi's Community (Ile-Ife) was considered impossible to match.

After several attempts to identify and manage the threats, Moremi, in an act of altruism, decided to let herself be captured by the Ugbo in order to learn the secret of their success. If successful, Moremi would be rewarded greatly – up to half of the king's wealth and power in her own right. In the land of her captivity, Moremi was given to the king for a wife because of her beauty, charm and intelligence.

The questions to consider are:

- What prompted Moremi to take this risk?
- What was the King's strategy by allowing Moremi to embark on this journey?
- What were the community's strategic objectives, risk appetite, tolerance limits, opportunities and threats?
- How could they have assessed the risks to the community?
- What are the consequences of doing nothing?
- Is this risk justified by the proposed reward?

This unique practical risk training workshop gives delegates an opportunity to explore and learn the relationship between strategic planning, risk management, performance outcomes and reward management.

Delegates will be taken back to the ancient West African city of Ile-Ife, right in the comfort of the training room, where they will have the opportunity to learn how to make highly effective decisions in difficult times.



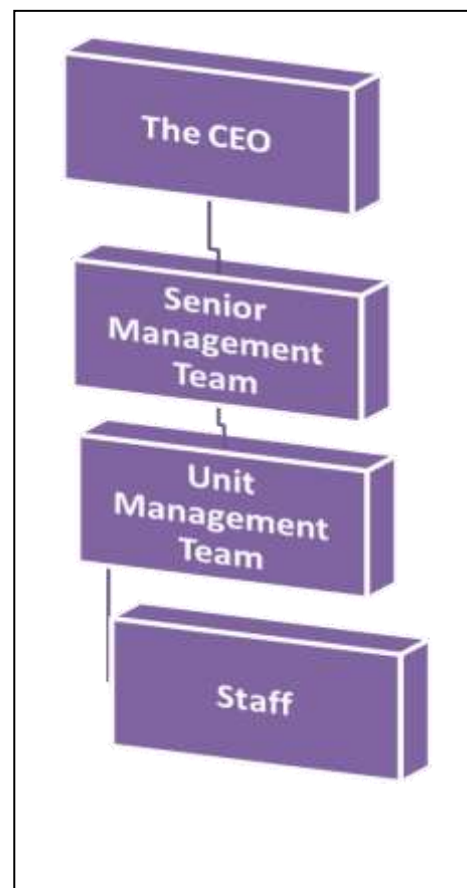
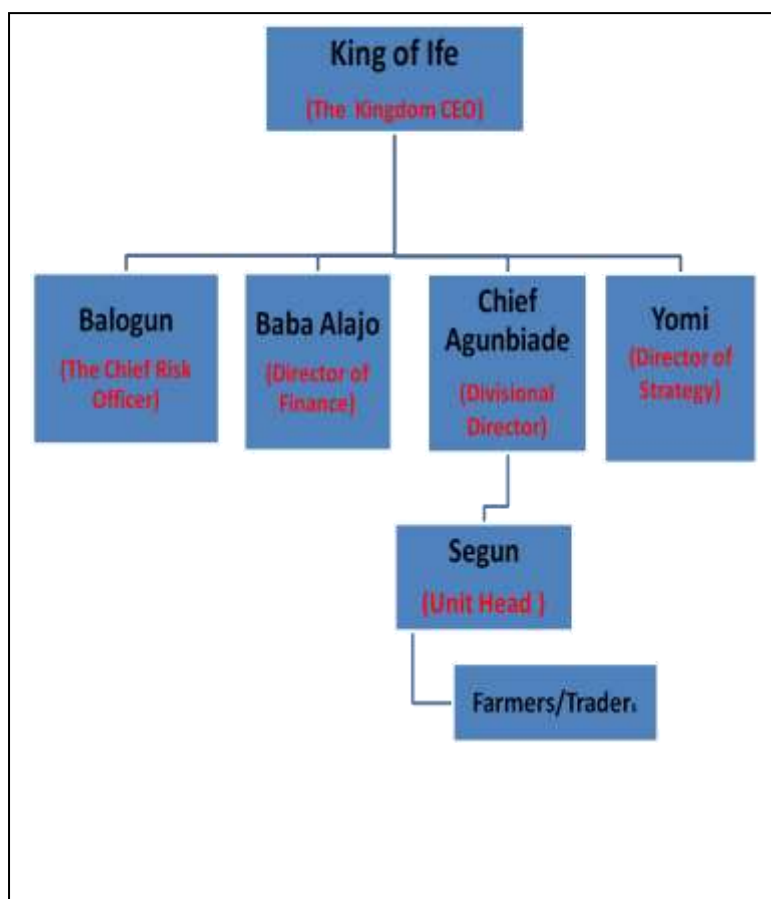
Name in the film	Role
<b>King Adejola Akinola</b>	The King/CEO of Ile-Ife Kingdom
<b>Balogun</b>	The King's Chief Risk Officer
<b>Yomi</b>	Director of Strategy & Planning
<b>Chief Agunbiade</b>	Divisional/Regional Director - Ilesha District
<b>Baba Alajo</b>	Director of Finance & Treasurer
<b>Segun</b>	Head of Farmers - Modakeke Town
<b>Moremi</b>	Segun's wife and a Farmer - Modakeke Town
<b>Wasope</b>	Farmer – Modakeke Town
<b>Morenike</b>	Senior Manager – Ilesha District
<b>The Ugbos</b>	The Kingdom's Competitor

### The Kingdom Structure

- Kingdom of Ife
- Province of Ilesha
- The Town of Modakeke

### Organisation Structure

- Board & Executive Level
- Middle Management Level
- Individual Unit/Team Level



## What is Moremi about?

Moremi is an organisational growth tool that incorporates the management of risks and strategic change. It includes:

- Teaching, explaining and applying the concepts of Strategic Management, Risk, Organisation Growth (People, Process and Performance) and Strategic Change (Culture).
- **The Five 'O's**
  - Objectives – what are you trying to do, why and when?
  - Operations – How are you doing it? (e.g. *Lands, Farming, Yams, Army*)
  - Obstacles – what could go wrong? (*Risk and issue identification*)
  - Opportunities – What we are not taking advantage of?
  - Outcomes – what do we expect? (*Profit, prosperity and returns*)
- Kingdom – Vision, Purpose, Commission and Operations
- Key elements of Moremi:
  - Taxes – *Sources of income?*
  - Farmers & Armies – *Skillsets and expertise in your organisation?*
  - Yams – *What are your organisations products?*
  - Land – *Organisation capital or resources?*
  - Council of Elders – *Board and senior management*

**IRMS Ltd (UK)**  
**Team Learning & Developing**  
[info@inspirationalrisk.com](mailto:info@inspirationalrisk.com)